



Exova Catalyst, Unit 37, Evans Business Centre, Western Industrial Estate, Caerphilly, CF83 1BE  
T: 0800 328 1821 (or + 44 161 432 3286 from overseas)  
E: stuart.davidson@cat-env.com  
Your Exova Catalyst Contact: Stuart Davidson (07957 554 956)

**Stack Emissions Testing Report Commissioned by**  
Blackmore Vale Farm Cream Dairy Ltd


**Installation Name & Address**  
Blackmore Vale Farm Cream Dairy Ltd  
BV Dairy  
Wincombe Lane  
Shaftesbury  
Dorset  
SP7 8QD

EPR Permit: EPR/HP3492EZ

**Stack Reference**  
A1 - Anaerobic Digester CHP

**Dates of the Monitoring Campaign**  
15th January 2015

**Job Reference Number**  
CSW-1699

<b>Report Written by</b>
Wayne Rossouw Technician MCERTS Level 1 MM 10 1083 TE1 TE2 TE3 TE4
<b>Report Approved by</b>
Martin Futter Team Leader MCERTS Level 2 MM 03 216 TE1 TE2 TE3 TE4
<b>Report Date</b>
2nd February 2015
<b>Version</b>
Version 1
<b>Signature of Report Approver</b>


## CONTENTS

TITLE PAGE

CONTENTS 2

EXECUTIVE SUMMARY

Monitoring Objectives	3
Monitoring Results	4
Monitoring Dates & Times	5
Process Details	6
Monitoring & Analytical Methods	7
Summary of Method Deviations	7
Sampling Location	8
Plant Photos / Sample Points	9

APPENDIX 1 - Monitoring Personnel & List of Equipment

APPENDIX 2 - Raw Data, Sampling Equations & Charts

*Opinions and interpretations expressed herein are outside the scope of Exova Catalyst's ISO 17025 accreditation.*

*This test report shall not be reproduced, except in full, without the written approval of Exova Catalyst.*

## Executive Summary

(Page 1 of 7)

### MONITORING OBJECTIVES

Blackmore Vale Farm Cream Dairy Ltd, Shaftesbury

A1 - Anaerobic Digester CHP

15th January 2015

#### Overall Aim of the Monitoring Campaign

Exova Catalyst were commissioned by Blackmore Vale Farm Cream Dairy Ltd to carry out stack emissions testing on the A1 - Anaerobic Digester CHP at Shaftesbury.

The aim of the monitoring campaign was to demonstrate compliance with a set of emission limit values (ELVs) as specified in the Site's Permit.

#### Special Requirements

There were no special requirements.

#### Target Parameters

Sulphur Dioxide, Non-Methane VOCs , Oxides of Nitrogen (as NO<sub>2</sub>), Total VOCs (as Carbon), Carbon Monoxide

## Executive Summary

(Page 2 of 7)

### MONITORING RESULTS

Blackmore Vale Farm Cream Dairy Ltd, Shaftesbury

A1 - Anaerobic Digester CHP

15th January 2015

where MU = Measurement Uncertainty associated with the Result

Parameter	Concentration					Mass Emission			
	Units	Result	MU *	Limit **		Units	Result	MU	Limit
			+/-					+/-	
Sulphur Dioxide	<sup>1</sup> mg/m <sup>3</sup>	0.61	0.09	350		g/hr	0.43	0.07	-
Non-Methane VOCs	<sup>1</sup> mg/m <sup>3</sup>	0.10	0.02	75		g/hr	0.07	7.6	-
Total VOCs (as Carbon)	<sup>1</sup> mg/m <sup>3</sup>	566	227	1000		g/hr	397	43.7	-
Oxides of Nitrogen (as NO <sub>2</sub> )	<sup>1</sup> mg/m <sup>3</sup>	550	165	500		g/hr	386	45.0	-
Carbon Monoxide	<sup>1</sup> mg/m <sup>3</sup>	431	86.1	1400		g/hr	302	34.4	-
Oxygen	% v/v	Dry 5.6	0.41						
Water Vapour	% v/v	5.5	0.29						
Stack Gas Temperature	°C	178							
Stack Gas Velocity	m/s	9.7	0.60						
Volumetric Flow Rate (ACTUAL)	m <sup>3</sup> /hr	1326	101						
Volumetric Flow Rate (REF)	<sup>1</sup> m <sup>3</sup> /hr	700	53						

NOTE: VOLUMETRIC FLOW RATE DATA TAKEN FROM THE PRELIMINARY VELOCITY TRAVERSE.

<sup>1</sup> Reference Conditions (REF) are: 273K, 101.3kPa, dry gas, 5% oxygen.

\* The MU is calculated from values in LFTGN 08 [2010]. i.e. 20% of the Result for CO, 30% of the Result for NO<sub>x</sub> & 40% of the Result for TVOCs)

\*\* The result is considered to be an 'Approach to Limit' if it is above the Limit, but below the Limit once the MU is subtracted from it. The Result is considered to be Non-Compliant if, even after subtracting the MU from the Result, the Result is still above the Limit in LFTGN 08 [2010] or the calculated MU (See the Measurement Uncertainty Calculations in Appendix 2 of this Test Report) is above 6% for CO, 10% for NO<sub>x</sub> & 15% for TVOCs

# Executive Summary

(Page 3 of 7)

## MONITORING DATE(S) & TIMES

Blackmore Vale Farm Cream Dairy Ltd, Shaftesbury  
A1 - Anaerobic Digester CHP  
15th January 2015

Parameter		Units	Concentration	Units	Mass Emission	Sampling Date(s)	Sampling Times	Duration mins
Sulphur Dioxide	R1	mg/m <sup>3</sup>	0.61	g/hr	0.43	15/01/2015	12:45 - 13:45	60
Non-Methane VOCs	R1	mg/m <sup>3</sup>	0.10	g/hr	0.07	15/01/2015	12:45 - 13:45	60
Total VOCs (as Carbon)	R1	mg/m <sup>3</sup>	566	g/hr	397	15/01/2015	12:45 - 13:45	60
Oxides of Nitrogen (as NO <sub>2</sub> )	R1	mg/m <sup>3</sup>	550	g/hr	386	15/01/2015	12:45 - 13:45	60
Carbon Monoxide	R1	mg/m <sup>3</sup>	431	g/hr	302	15/01/2015	12:45 - 13:45	60
Oxygen	R1	% v/v	5.6			15/01/2015	12:45 - 13:45	60
Velocity & Volumetric Flow Rate	R1					15/01/2015	11:50 - 11:58	

All results are expressed at the respective reference conditions.

# Executive Summary

(Page 4 of 7)

## PROCESS DETAILS

Blackmore Vale Farm Cream Dairy Ltd, Shaftesbury  
A1 - Anaerobic Digester CHP  
15th January 2015

### Standard Operating Conditions

Parameter	Value
Process Status	Operational
Capacity (of 100%) and Tonnes / Hour	Normal
Continuous or Batch Process	Continuous
Feedstock (if applicable)	Bio Gas
Abatement System	None
Abatement System Running Status	N/A
Fuel	Bio Gas
Plume Appearance	None Visible

### Site Specific Operating Conditions

Parameter	Status
Gas Composition	Methane 69.0%, Carbon Dioxide 29.3%, H <sub>2</sub> S 0ppm

## Executive Summary

(Page 5 of 7)

### MONITORING & ANALYTICAL METHODS

Blackmore Vale Farm Cream Dairy Ltd, Shaftesbury

A1 - Anaerobic Digester CHP

15th January 2015

Parameter	Monitoring				Analysis				MCERTS Testing	LOD (Average)
	Standard	Technical Procedure	ISO 17025 Testing	Testing Lab	Analytical Procedure	Analytical Technique	ISO 17025 Analysis	Analysis Lab		
Sulphur Dioxide	EN 14791	CAT-TP-09	Yes	CAT	CAT-AP-01	IC	Yes	CAT	Yes	0.158 mg/m <sup>3</sup>
Non-Methane VOCs	EN 13649	CAT-TP-16	Yes	CAT	In-House	GC-FID	No	RPS	No	0.069 mg/m <sup>3</sup>
Water Vapour	EN 14790	CAT-TP-05	Yes	CAT	CAT-TP-05	Gravimetric	Yes	CAT	Yes	0.1 % v/v
Total VOCs (as Carbon)	EN 12619:2013	CAT-TP-20	Yes	CAT	Flame Ionisation Detection by Sick 3006 FID				Yes	1.61 mg/m <sup>3</sup>
Oxides of Nitrogen (as NO <sub>2</sub> )	EN 14792	CAT-TP-21	Yes	CAT	Chemiluminescence by Horiba PG-250				Yes	2.05 mg/m <sup>3</sup>
Carbon Monoxide	EN 15058	CAT-TP-21	Yes	CAT	NDIR by Horiba PG-250				Yes	1.25 mg/m <sup>3</sup>
Oxygen	EN 14789	CAT-TP-21	Yes	CAT	Dry Zirconia Cell by Horiba PG-250				Yes	0.1 %
Velocity & Vol. Flow Rate	EN 16911-1 (MID)	CAT-TP-41	Yes	CAT	Pitot Tube and Thermocouple				Yes	N/A

### ANALYSIS LABORATORIES

(with short name reference as appears in the table above)

Exova Catalyst (CAT)	ISO 17025 Accreditation Number: 4279
RPS Laboratories Ltd (RPS)	ISO 17025 Accreditation Number: 0605

### SUMMARY OF SAMPLING DEVIATIONS

Parameter	Run	Deviation
All	All	There are no deviations associated with the sampling employed.

## Executive Summary

(Page 6 of 7)

### SUITABILITY OF SAMPLING LOCATION

#### Duct Characteristics

Parameter	Units	Value
Type	-	Circular
Depth	m	0.22
Width	m	-
Area	m <sup>2</sup>	0.04
Port Depth	cm	5
Orientation of Duct	-	Vertical
Sample Port Size	-	2" BSP

#### Location of Sampling Platform

General Platform Information	Value
Permanent / Temporary Platform	MEWP
Inside / Outside	Outside

#### Platform Details

EA Technical Guidance Note M1 / EN 15259 Platform Requirements	Value
Sufficient working area to manipulate probe and operate the measuring instruments	Yes
Platform has 2 levels of handrails (approx. 0.5m & 1.0m high)	N/A
Platform has vertical base boards (approx. 0.25m high)	N/A
Platform has chains / self closing gates at top of ladders	N/A
There are no obstructions present which hamper insertion of sampling equipment	Yes
Safe Access Available	Yes
Easy Access Available	Yes

#### Sampling Location / Platform Improvement Recommendations

All platforms should be designed in accordance with the requirements in the Environment Agency's Technical Guidance Note M1 and EN 15259.

#### EN 15259 Homogeneity Test Requirements

There is no requirement to perform a EN 15259 Homogeneity Test on this Stack.

#### Sampling Plane Validation Criteria (from EN 15259)

Criteria in EN 15259	Units	Traverse 1		Required	Compliant
Lowest Differential Pressure	Pa	44.0		> 5 Pa	Yes
Mean Velocity	m/s	9.69		-	-
Lowest Gas Velocity	m/s	9.05		-	-
Highest Gas Velocity	m/s	10.31		-	-
Ratio of Above	: 1	1.14		< 3 : 1	Yes
Maximum Angle of Swirl	°	NM		< 15°	-
No Local Negative Flow	-	Yes		-	Yes

Where NM = Not Measured as no Isokinetic sampling was performed.



Executive Summary

(Page 7 of 7)

PLANT PHOTOS

Photo 1



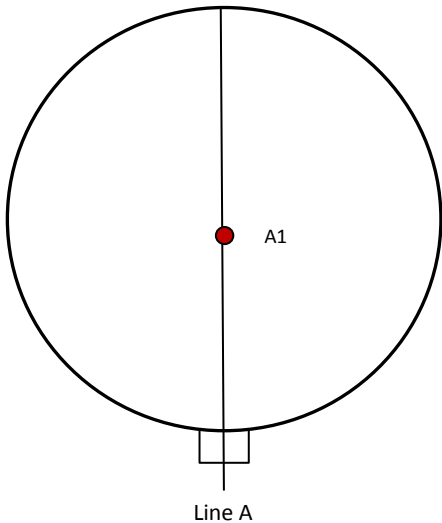
Photo 2



Photo 3



SAMPLE POINTS



- where

○= isokinetic point sampled at

●= isokinetic point not sampled at

●= combustion gases sample point

○= non-isokinetic sample point

## APPENDICES

### APPENDIX CONTENTS

APPENDIX 1 - Stack Emissions Monitoring Personnel, List of Equipment & Methods and Technical Procedures Used

APPENDIX 2 - Summaries, Calculations, Raw Data and Charts

## STACK EMISSIONS MONITORING PERSONNEL

Position	Name	MCERTS Accreditation	MCERTS Number	Technical Endorsements
Team Leader	Martin Futter	MCERTS Level 2	MM 03 216	TE1 TE2 TE3 TE4
Technician	Wayne Rossouw	MCERTS Level 1	MM 10 1083	TE1 TE2 TE3 TE4

## LIST OF EQUIPMENT

Extractive Sampling		Instrumental Analysers		Miscellaneous Items	
Equipment Type	Equipment I.D.	Equipment Type	Equipment I.D.	Equipment Type	Equipment I.D.
Control Box DGM (1)	-	Horiba PG-250	CAT 9.6	Digital Manometer (1)	CAT 3.56
Control Box DGM (2)	-	Horiba PG-250	-	Digital Manometer (2)	-
Box Thermocouples (1)	-	Servomex 4900	-	Digital Temperature Meter	CAT 3.56
Box Thermocouples (2)	-	Eco Physics CLD 822Mh	-	Stopwatch	CAT 14.38
Umbilical (1)	-	ABB AO2020-URAS26	-	Barometer	CAT 13.17
Umbilical (2)	-	Servomex 5200MP	-	Stack Thermocouple (1)	-
Oven Box (1)	-	JCT JCC P1 Cooler	CAT 4.204	Stack Thermocouple (2)	-
Oven Box (2)	-	Gasmet DX4000	-	Stack Thermocouple (3)	-
Heated Probe (1)	-	Gasmet Sampling System	-	1m Heated Line (1)	-
Heated Probe (2)	-	Bernath 3006 FID	CAT 8.13	1m Heated Line (2)	-
Heated Probe (3)	-	M&C PSS	CAT 12.46	1m Heated Line (3)	-
S-Pitot (1)	-	Mass Flow Controller (1)	CAT 6.34	5m Heated Line (1)	-
S-Pitot (2)	-	Mass Flow Controller (2)	CAT 6.35	15m Heated Line (1)	-
L-Pitot	CAT 21L.16	Mass View (1)	CAT 25.27	20m Heated Line (1)	-
500g Check Weight	CAT 17.14	Mass View (2)	CAT 25.28	20m Heated Line (2)	CAT 20.63
1Kg Check Weight	CAT 17.14	Easylogger EN-EL-12 Bit	CAT 11.33	Dual Channel Heater Controller	-
Last Impinger Arm	CAT 4.210	Easylogger EN-EL-12 Bit	-	Single Channel Heater Controller	CAT 20.63
Callipers	CAT 23.18			Laboratory Balance	CAT 1.18 / 1.18a
Tubes Kit Thermocouple	CAT 4.1216			Tape Measure	-

## METHODS & TECHNICAL PROCEDURES USED

Parameter	Standard	Technical Procedure
Sulphur Dioxide	EN 14791	CAT-TP-09
Non-Methane VOCs	EN 13649	CAT-TP-16
Water Vapour	EN 14790	CAT-TP-05
Total VOCs (as Carbon)	EN 12619:2013	CAT-TP-20
Oxides of Nitrogen (as NO <sub>2</sub> )	EN 14792	CAT-TP-21
Carbon Monoxide	EN 15058	CAT-TP-21
Oxygen	EN 14789	CAT-TP-21
Velocity & Vol. Flow Rate	EN 16911-1 (MID)	CAT-TP-41

## PRELIMINARY STACK SURVEY: CALCULATIONS

### General Stack Details

Stack Details (from Traverse)	Units	Value
Stack Diameter / Depth, D	m	0.22
Stack Width, W	m	-
Stack Area, A	m <sup>2</sup>	0.04
Average Stack Gas Temperature, T <sub>a</sub>	°C	177.8
Average Stack Gas Pressure	Pa	50.5
Average Stack Static Pressure, P <sub>static</sub>	kPa	0.047
Average Barometric Pressure, P <sub>b</sub>	kPa	96.8
Average Pitot Tube Calibration Coefficient, C <sub>p</sub>	-	0.84

### Stack Gas Composition & Molecular Weights

Component	Conc ppm	Conc Dry % v/v	Conc Wet % v/v	Volume Fraction r	Molar Mass M	Density kg/m <sup>3</sup> p	Conc kg/m <sup>3</sup> p <sub>i</sub>
CO <sub>2</sub> (Estimated)	-	10.00	9.45	0.1000	44.01	1.9635	0.19635
O <sub>2</sub>	-	5.56	5.25	0.0556	32.00	1.4277	0.07936
N <sub>2</sub>	-	84.44	79.82	0.8444	28.01	1.2498	1.05538
Moisture (H <sub>2</sub> O)	-	-	5.47	0.0547	18.02	0.8037	0.04395

Where:  $p = M / 22.41$

$p_i = r \times p$

### Calculation of Stack Gas Densities

Determinand	Units	Result
Dry Density (STP), P <sub>STD</sub>	kg/m <sup>3</sup>	1.331
Wet Density (STP), P <sub>STW</sub>	kg/m <sup>3</sup>	1.302
Dry Density (Actual), P <sub>Actual</sub>	kg/m <sup>3</sup>	0.771
Average Wet Density (Actual), P <sub>ActualW</sub>	kg/m <sup>3</sup>	0.754

Where: P<sub>STD</sub> = sum of component concentrations, kg/m<sup>3</sup> (not including water vapour)

P<sub>STW</sub> = sum of all wet concentrations / 100 x density, kg/m<sup>3</sup> (including water vapour)

$P_{Actual} = P_{STD} \times (T_{STP} / (P_{STP})) \times ((P_{static} + P_b) / T_a)$

$P_{ActualW}$  (at each sampling point) =  $P_{STW} \times (T_s / P_s) \times (P_a / T_a)$

### Calculation of Stack Gas Volumetric Flowrate, Q

Duct gas flow conditions	Units	Actual	REF <sup>1</sup>
Temperature	°C	177.8	0.0
Total Pressure	kPa	96.8	101.3
Moisture	%	5.47	0.00
Oxygen (Dry)	%	5.6	5.0

Gas Volumetric Flowrate (from Traverse)	Units	Result
Gas Volumetric Flowrate (Actual)	m <sup>3</sup> /hr	1326
Gas Volumetric Flowrate (STP, Wet)	m <sup>3</sup> /hr	768
Gas Volumetric Flowrate (STP, Dry)	m <sup>3</sup> /hr	726
Gas Volumetric Flowrate REF <sup>1</sup>	m <sup>3</sup> /hr	700

# PRELIMINARY STACK SURVEY: VELOCITY TRAVERSE TO EN 16911-1 (MID)

(1 of 1)

Parameter	Units	Value
Date of Survey	-	15/01/2015
Time of Survey	-	11:50 - 11:58
Atmospheric Pressure	kPa	96.8
Average Stack Static Pressure	Pa	47
Result of Pitot Stagnation Test	-	Pass
Are Water Droplets Present?	-	No
Device Used	S-Type Pitot with KIMO MP 200 (10000Pa)	

Parameter	Units	Value
Initial Pitot Leak Check	-	Pass
Final Pitot Leak Check	-	Pass
Orientation of Duct	-	Vertical
Pitot Tube, C <sub>p</sub>	-	0.84
Number of Lines Available	-	2
Number of Lines Used	-	1

Sampling Line A							Sampling Line B				
Traverse Point	Depth m	ΔP Pa	Temp °C	Wet Density kg/m <sup>3</sup>	Velocity m/s	Swirl °	ΔP Pa	Temp °C	Wet Density kg/m <sup>3</sup>	Velocity m/s	Swirl °
STATIC (Units: Pa)		47.0					47.0				
Mean		45.0	177.5	0.754	9.16		56.0	178.0	0.754	10.22	
1	0.01	45.0	178.0	0.754	9.16		56.0	178.0	0.754	10.22	
2	0.06	44.0	177.0	0.755	9.05		57.0	178.0	0.754	10.31	
3	0.17	45.0	178.0	0.754	9.16		55.0	178.0	0.754	10.13	
4	0.21	46.0	177.0	0.755	9.25		56.0	178.0	0.754	10.22	

# PRELIMINARY STACK SURVEY: VELOCITY TRAVERSE TO EN 16911-1 (MID) - MEASUREMENT UNCERTAINTY

(1 of 1)

Performance characteristics (Uncertainty Components)	Uncertainty	Value	Units
Standard Uncertainty on the coefficient of the Pitot Tube	$u(k)$	0.005	-
Standard Uncertainty associated with the mean local dynamic pressures	$u(\Delta p_i)$	5.936	Pa
- Resolution	$u(res)$	0.08677	
- Calibration	$u(cal)$	0.266	
- Drift	$u(drift)$	33.333	
- Lack of Fit	$u(fit)$	0.555	
- Overall corrections to dynamic measurements	$u(C_f)$	34.241	
Standard uncertainty associated with the molar mass of the gas	$u(M)$	0.00005	-
- $\varphi_{O_2,w}$	-	5.255	
- $\varphi_{CO_2,w}$	-	9.453	
- Oxygen, dry	$u(\phi_{O_2,d})$	0.170	
- Carbon Dioxide, dry	$u(\phi_{CO_2,d})$	0.306	
- Water Vapour	$u(\phi_{H_2O})$	0.279	
- Oxygen, wet	$u(\phi_{O_2,w})$	0.162	
- Carbon Dioxide, wet	$u(\phi_{CO_2,w})$	0.291	
Standard uncertainty associated with the stack temperature	$u(T_c)$	2.300	K
Standard uncertainty associated with the absolute pressure in the duct	$u(p_c)$	175.792	Pa
- Atmospheric Pressure	$u(p_{atm})$	175.692	
- Static Pressure	$u(p_{stat})$	5.936	
Standard uncertainty associated with the density in the duct	$u(\rho)$	0.00408	-
Standard uncertainty associated with the local velocities	$u(v_i)$	0.616	Pa
Standard uncertainty associated with the mean velocity	$u(\bar{v})$	0.304	m/s
Standard uncertainty associated with the mean velocity (95% Confidence)	$U_c(v)$	0.596	m/s
Standard uncertainty associated with the mean velocity (95% Confidence), relative	$U_{c,rel}(v)$	6.15	%
Standard uncertainty associated with the volume flow rate (95% Confidence)	$U_c(qV,w)$	101.2	m <sup>3</sup> /hr
- $u^2(a)/a^2$	-	0.00053	
- $u^2(qV,w)/q^2V,w$	-	0.00152	
- $u^2(qV,w)$	-	2667	
- $u(qV,w)$	-	51.6	
Standard uncertainty associated with the volume flow rate (95% Confidence), relative	$U_{c,rel}(qV,w)$	7.63	%

## SULPHUR DIOXIDE: RESULTS SUMMARY

Blackmore Vale Farm Cream Dairy Ltd, Shaftesbury  
A1 - Anaerobic Digester CHP

### Sample Runs

Parameter	Units	Run 1		Mean
Concentration	mg/m <sup>3</sup>	0.61		0.61
Uncertainty	±mg/m <sup>3</sup>	0.09		0.09
Mass Emission	g/hr	0.43		0.43
Uncertainty	±g/hr	0.07		0.07

Parameter	Units	Run 1		Mean
Water Vapour	% v/v	5.5		5.5
Uncertainty	±% v/v	0.29		0.29

### Blank Runs

Parameter	Units	Blank 1		Maximum
Concentration	mg/m <sup>3</sup>	< 0.13		< 0.13

### General Sampling Information

Parameter	Value	
Standard	EN 14791	
Technical Procedure	CAT-TP-09	
Name of Analytical Laboratory	CAT	
Analytical Laboratory's Procedure	CAT-AP-01	
ISO 17025 Accredited Analysis?	Yes	
Date of Sample Analysis	21/01/2015	
Probe Material	Stainless Steel	
Filter Housing Material	Borosilicate Glass	
Impinger Material	Polyethylene	
Absorption Solution	0.3% Hydrogen Peroxide	
Positioning of Filter	Out Stack Heated Head	
Filter Size and Material	0.1µm Glass Fibre	
Number of Sampling Lines Used	1 / 1	FORMAT: Number Used / Number Required
Number of Sampling Points Used	1 / 1	FORMAT: Number Used / Number Required
Sample Point I.D.'s	A1	

### Reference Conditions

Reference Conditions are: 273K, 101.3kPa, dry gas, 5% oxygen.

## SULPHUR DIOXIDE: SAMPLING DETAILS

### Sample Runs

Parameter	Units	Run 1	
Sampling Times	-	12:45 - 13:45	
Sampling Dates	-	15/01/2015	
Sampling Device	-	MFC / MV	
Duration	mins	60	
Volume Sampled (STP, Dry)	m <sup>3</sup>	0.1400	
Volume Sampled (STP, Wet)	m <sup>3</sup>	0.1481	
Volume Sampled (REF)	m <sup>3</sup>	0.1351	
Sample Flow Rate	l/min	2.25	
Laboratory Result for Front Impingers	µg/ml	0.25	
Laboratory Result for Back Impinger	µg/ml	0.07	
Volume in Front Impingers	ml	291.0	
Volume in Back Impinger	ml	135.9	
Mass in Front Impingers	µg	72.8	
Mass in Back Impinger	µg	9.5	
Total Mass Collected	µg	82.3	
Calculated Concentration	mg/m <sup>3</sup>	0.61	
Liquid Trap Start Mass	g	1467.7	
Liquid Trap End Mass	g	1473.4	
Silica Trap Start Mass	g	1471.7	
Silica Trap End Mass	g	1472.5	
Total Mass Of Water Vapour	g	6.5	
Calculated Water Vapour	% v/v	5.47	

**Where:** MFC stands for Mass Flow Controller, MV stands for Mass View Flowmeter

### Blank Runs

Parameter	Units	Blank 1	
Blank Dates	-	15/01/2015	
Average Volume Sampled (REF)	m <sup>3</sup>	0.1351	
Laboratory Result for Impingers	µg/ml	< 0.05	
Volume in Impingers	ml	347.9	
Total Mass Collected	µg	< 17.4	
Calculated Concentration	mg/m <sup>3</sup>	< 0.13	



## SULPHUR DIOXIDE: QUALITY ASSURANCE

### Sample Runs

Leak Test Results	Units	Run 1	
Mean Sampling Rate	l/min	2.25	
Pre-Sampling Leak Rate	l/min	1.00	
Post-Sampling Leak Rate	l/min	0.00	
Allowable Leak Rate	l/min	0.05	
Leak Test Acceptable	-	Yes	

Absorption Efficiency	Units	Run 1	
Absorption Efficiency	%	88.4	
Allowable Absorption Efficiency	%	N/A <sup>2</sup>	
Absorption Efficiency Acceptable	-	N/A <sup>2</sup>	

<sup>2</sup> The concentration is less than 30% of the ELV, therefore no assessment against an allowable efficiency is required.

Water Droplets	Units	Run 1	
Are Water Droplets Present	-	No	

MU (Concurrent Water Vapour)	Units	Run 1	
Measurement Uncertainty (MU)	%	5.2	
Allowable MU	%	20	
MU Acceptable	%	Yes	

Silica Gel (Concurrent Water Vapour)	Units	Run 1	
Less than 50% Faded	%	Yes	

Test Conditions	Units	Run 1	
Ambient Temperature Recorded?	-	Yes	

### Blank Runs

Leak Test Results	Units	Blank 1	
Expected Sampling Rate	l/min	13.00	
Pre-Sampling Leak Rate	l/min	0.10	
Post-Sampling Leak Rate	l/min	0.16	
Allowable Leak Rate	l/min	0.26	
Leak Test Acceptable	-	Yes	

Validity of Blank vs ELV	Units	Blank 1	
Allowable Blank	mg/m <sup>3</sup>	35.0	
Blank Acceptable	-	Yes	

### Method Deviations

Nature of Deviation	Run Number	
(x = deviation applies to the associated run, wx = deviation also applies to the concurrent water vapour run)	1	
There are no deviations associated with the sampling employed.	x	

## SULPHUR DIOXIDE: MEASUREMENT UNCERTAINTY CALCULATIONS

Measured Quantities	Value			Standard uncertainty			
	Symbol	Run 1		Symbol	Units	Run 1	
Sampled Volume (STP)	V <sub>m</sub>	0.1400		uV <sub>m</sub>	m <sup>3</sup>	0.0028	
Leak	L	0.00		uL	%	-	
Laboratory Result	L <sub>r</sub>	7.00		uL <sub>r</sub>	%	-	

Uncertainty as a Percentage				
Measured Quantities	Units	Run 1		Requirement of Standard
Sampled Volume (STP)	%	2.00		≤2%
Leak	%	0.00		≤2%
Laboratory Result	%	7.00		No Requirement

Uncertainty in Measurement Units				Sensitivity Coefficient	
Measured Quantities	Symbol	Units	Run 1	Run 1	
Sampled Volume (STP)	V <sub>m</sub>	m <sup>3</sup>	0.1400	4.35	
Leak	L	mg/m <sup>3</sup>	0.000	1.00	
Laboratory Result	L <sub>r</sub>	mg/m <sup>3</sup>	0.043	1.00	

Uncertainty in Result			
Measured Quantities	Units	Run 1	
Sampled Volume (STP)	mg/m <sup>3</sup>	0.0122	
Leak	mg/m <sup>3</sup>	0.0000	
Laboratory Result	mg/m <sup>3</sup>	0.0426	

Oxygen Correction Part of MU Budget			
Measured Quantities	Units	Run 1	
O <sub>2</sub> Correction Factor	-	1.04	
Stack Gas O <sub>2</sub> Content	% v/v	5.56	
MU for O <sub>2</sub> Correction	-	0.03	
Overall MU For O <sub>2</sub> Measurement	%	3.24	

Parameter	Units	Run 1	
Combined uncertainty	mg/m <sup>3</sup>	0.04	
Expanded uncertainty (95% confidence), without Oxygen Correction	mg/m <sup>3</sup>	0.09	
Expanded uncertainty (95% confidence), with Oxygen Correction	mg/m <sup>3</sup>	0.09	
Expanded uncertainty (95% confidence), estimated with Method Deviations	mg/m <sup>3</sup>	0.09	
Reported Uncertainty	mg/m <sup>3</sup>	0.09	
Expanded uncertainty (95% confidence), without Oxygen Correction	%	14.3	
Expanded uncertainty (95% confidence), with Oxygen Correction	%	14.6	
Expanded uncertainty (95% confidence), estimated with Method Deviations	%	14.6	
Reported Uncertainty	%	14.6	

## NON-METHANE VOCs : RESULTS SUMMARY

Blackmore Vale Farm Cream Dairy Ltd, Shaftesbury  
A1 - Anaerobic Digester CHP

### Sample Runs

Parameter	Units	Run 1		Mean
Non-Methane VOCs	mg/m <sup>3</sup>	0.10		0.10

### General Sampling Information

Parameter	Value	
Standard	EN 13649	
Technical Procedure	CAT-TP-16	
Name of Analytical Laboratory	RPS	
Analytical Laboratory's Procedure	In-House	
ISO 17025 Accredited Analysis?	See Executive Summary	
Date of Sample Analysis	23/01/2015	
Probe Material	Stainless Steel	
Sample Tube Type	Coconut Shell Charcoal	
Dynamic Dilution Employed	Yes	
Number of Sampling Lines Used	1 / 1	FORMAT: Number Used / Number Required
Number of Sampling Points Used	1 / 1	FORMAT: Number Used / Number Required
Sample Point I.D.'s	A1	

### Reference Conditions

Reference Conditions are: 273K, 101.3kPa, dry gas, 5% oxygen.

## NON-METHANE VOCs : SAMPLING DETAILS

### RUN 1

Parameter	Units	Value
Sampling Times	-	12:45 - 13:45
Sampling Dates	-	15/01/2015
Sampling Device	-	MV
Duration	mins	60
N <sub>2</sub> to Stack Gas Dilution Ratio	: 1	3
Volume Sampled (REF)	m <sup>3</sup>	0.0145

**Where:** MV stands for Mass View (Mass Flow Controller Technology)

Parameter	Lab Result (Front) µg	Lab Result (Back) µg	Lab Result (Total) µg	LOD (Front) µg	LOD (Back) µg	LOD (Total) µg	Concentration mg/m <sup>3</sup>	Reported Concentration (Blank Reviewed) mg/m <sup>3</sup>	Reported LOD mg/m <sup>3</sup>	Adsorption Efficiency %
Non-Methane VOCs	0.90	< 0.5	1.4	0.50	0.50	1.0	0.097	0.097	0.069	100.0

### Reference Conditions

Reference Conditions are: 273K, 101.3kPa, dry gas, 5% oxygen.

## NON-METHANE VOCs : SAMPLING DETAILS

### BLANK 1

Parameter	Units	Value
Sampling Dates	-	15/01/2015
Sampling Device	-	MV
Average Volume Sampled (REF)	m <sup>3</sup>	0.0145

**Where:** MV stands for Mass View (Mass Flow Controller Technology)

Parameter	Lab Result (Front) µg	Lab Result (Back) µg	Lab Result (Total) µg	Concentration mg/m <sup>3</sup>
Non-Methane VOCs	< 0.5	< 0.5	1.0	< 0.069

### Reference Conditions

Reference Conditions are: 273K, 101.3kPa, dry gas, 5% oxygen.

## NON-METHANE VOCS : QUALITY ASSURANCE

(PAGE 1 OF 2)

### Sample Runs

Leak Test Results	Units	Run 1	
Mean Sampling Rate	l/min	1.000	
Pre-Sampling Leak Rate	l/min	0.000	
Post-Sampling Leak Rate	l/min	0.000	
Allowable Leak Rate	l/min	0.020	
Leak Test Acceptable	-	Yes	

Adsorption Efficiency	Units	Run 1	
Non-Methane VOCs	%	100.0	
Allowable Adsorption Efficiency	%	95	
Adsorption Efficiency Acceptable	-	Yes	

Temperature at Sample Tubes	Units	Run 1	
Temperature	°C	14	
Allowable Temperature	°C	40	
Temperature Acceptable	-	Yes	

Test Conditions	Units	Run 1	
Ambient Temperature Recorded?	-	Yes	

## NON-METHANE VOCS : QUALITY ASSURANCE

(PAGE 2 OF 2)

### Blank Runs

Leak Test Results	Units	Blank 1	
Expected Sampling Rate	l/min	0.500	
Sampling Leak Rate	l/min	0.000	
Allowable Leak Rate	l/min	0.010	
Leak Test Acceptable	-	Yes	

Validity of Blank vs ELV	Units	Blank 1	Allowed	
Allowable for Non-Methane VOCs	mg/m <sup>3</sup>	0.1	3.8	
Allowable for TOTAL	mg/m <sup>3</sup>	0.1	3.8	

### Method Deviations

Nature of Deviation	Run Number
(x = deviation applies to the associated run)	1
There are no deviations associated with the sampling employed.	x

## NON-METHANE VOCs : MEASUREMENT UNCERTAINTY CALCULATIONS

Measured Quantities	Value			Standard uncertainty			
	Symbol	Run 1		Symbol	Units	Run 1	
Sampled Volume (STP)	V <sub>m</sub>	0.0150		uV <sub>m</sub>	m <sup>3</sup>	0.0	
Leak	L	0.000		uL	%	-	
Laboratory Result	L <sub>r</sub>	10.00		uL <sub>r</sub>	%	-	

Uncertainty as a Percentage				
Measured Quantities	Units	Run 1		Requirement of Standard
Sampled Volume (STP)	%	2.00		≤2%
Leak	%	0.00		≤2%
Laboratory Result	%	10.00		No Requirement

Uncertainty in Measurement Units				Sensitivity Coefficient	
Measured Quantities	Symbol	Units	Run 1	Run 1	
Sampled Volume (STP)	V <sub>m</sub>	m <sup>3</sup>	0.0150	6.47	
Leak	L	mg/m <sup>3</sup>	0.000	1.00	
Laboratory Result	L <sub>r</sub>	mg/m <sup>3</sup>	0.010	1.00	

Uncertainty in Result			
Measured Quantities	Units	Run 1	
Sampled Volume (STP)	mg/m <sup>3</sup>	0.0019	
Leak	mg/m <sup>3</sup>	0.0000	
Laboratory Result	mg/m <sup>3</sup>	0.0097	

Oxygen Correction Part of MU Budget			
Measured Quantities	Units	Run 1	
O <sub>2</sub> Correction Factor	-	1.04	
Stack Gas O <sub>2</sub> Content	% v/v	5.56	
MU for O <sub>2</sub> Correction	-	0.03	
Overall MU For O <sub>2</sub> Measurement	%	3.24	

Parameter	Units	Run 1	
Combined uncertainty	mg/m <sup>3</sup>	0.010	
Expanded uncertainty (95% confidence), without Oxygen Correction	mg/m <sup>3</sup>	0.019	
Expanded uncertainty (95% confidence), with Oxygen Correction	mg/m <sup>3</sup>	0.019	
Expanded uncertainty (95% confidence), estimated with Method Deviations	mg/m <sup>3</sup>	0.019	
Reported Uncertainty	mg/m <sup>3</sup>	0.019	
Expanded uncertainty (95% confidence), without Oxygen Correction	%	20.0	
Expanded uncertainty (95% confidence), with Oxygen Correction	%	20.0	
Expanded uncertainty (95% confidence), estimated with Method Deviations	%	20.0	
Reported Uncertainty	%	20.0	

NOTE: Uncertainties reported in mg/m<sup>3</sup> are based upon the summation of all Speciated VOCs Measured.



## TOTAL VOCs (as CARBON): RESULTS SUMMARY

Blackmore Vale Farm Cream Dairy Ltd, Shaftesbury  
A1 - Anaerobic Digester CHP

### Sample Runs

Parameter	Units	Run 1		Mean
Concentration	mg/m <sup>3</sup>	566		566
Uncertainty	±mg/m <sup>3</sup>	45.0		45.0
Mass Emission	g/hr	397		397
Uncertainty	±g/hr	43.7		43.7

### General Sampling Information

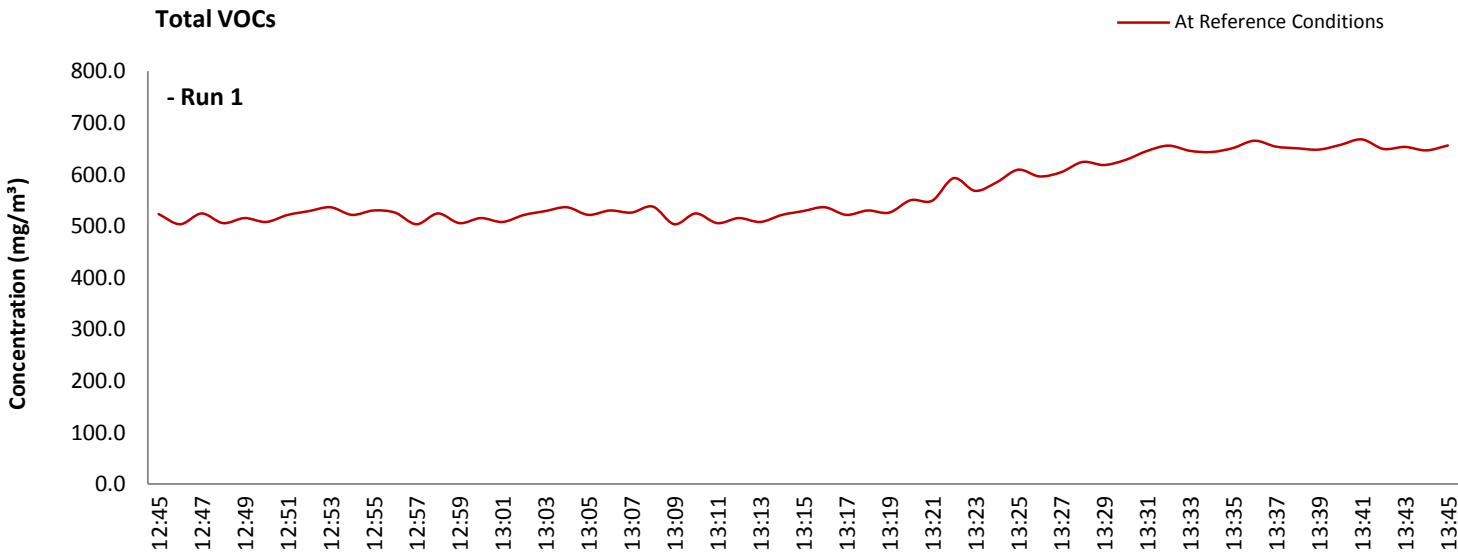
Parameter	Value	
Standard	EN 12619:2013	
Technical Procedure	CAT-TP-20	
Probe Material	Stainless Steel	
Filtration Type / Size	0.1µm Glass Fibre	
Heated Head Filter Used	Yes	
Heated Line Temperature	180°C	
Span Gas Type	Propane In Synthetic Air (5 Grade)	
Span Gas Reference Number	CYL 1.0103	
Span Gas Expiry Date	23/01/2015	
Span Gas Start Pressure (bar)	140	
Gas Cylinder Concentration (ppm)	8010	
Span Gas Set Point (ppm)	800.00	
Span Gas Uncertainty (%)	N/A	
Zero Gas Type	Synthetic Air (5 Grade)	
Number of Sampling Lines Used	1 / 1	FORMAT: Number Used / Number Required
Number of Sampling Points Used	1 / 1	FORMAT: Number Used / Number Required
Sample Point I.D.'s	A1	

### Reference Conditions

Reference Conditions are: 273K, 101.3kPa, dry gas, 5% oxygen.

TOTAL VOCs (as CARBON): DATA TREND

Graphical Trend of Data



## TOTAL VOCs (as CARBON): SAMPLING DETAILS & QUALITY ASSURANCE

### Sampling Details

Parameter	Units	Run 1	
Sampling Times	-	12:45 - 13:45	
Sampling Dates	-	15/01/2015	
Instrument Range	ppm	1000	
Span Gas Value	ppm	800.0	

### Quality Assurance

	Zero Drift	Units	Run 1	
CAL 1	Zero Down Sampling Line (Pre)	ppm	1.00	
	Zero Down Sampling Line (Post)	ppm	2.00	
	Zero Drift	ppm	1.00	
	Allowable Zero Drift	± ppm	40.00	
	Zero Drift Acceptable	-	Yes	

	Span Drift	Units	Run 1	
CAL 1	Span Down Sampling Line (Pre)	ppm	790.00	
	Span Down Sampling Line (Post)	ppm	794.00	
	Span Drift	ppm	4.00	
	Allowable Span Drift	± ppm	40.00	
	Span Drift Acceptable	-	Yes	

Test Conditions	Units	Run 1	
Run Ambient Temperature Range	°C	9 - 12	

### Method Deviations

Nature of Deviation	Run Number	
(x = deviation applies to the associated run)	1	
There are no deviations associated with the sampling employed.	x	

## TOTAL VOCs (as CARBON): MEASUREMENT UNCERTAINTY CALCULATIONS

Performance characteristics	RUN 1		Units
Limit value	1000.0		mg/m <sup>3</sup> (REF)
TGN M2 Allowable MU	15.0		%
Measured concentration	546.68		mg/m <sup>3</sup> (STP, dry)
Range Used	1000.0		ppm
Range Used [A]	1606.1		mg/m <sup>3</sup>
Cal gas conc.	800.0		ppm
Conversion	1.61		ppm to mg/m <sup>3</sup>
MCERTS Range [B]	15.0		mg/m <sup>3</sup>
Lower of [A] or [B]	15.0		mg/m <sup>3</sup>
Cal gas conc.	1284.9		mg/m <sup>3</sup>

Performance characteristics	RUN 1		Units
Response time	45		seconds
Number of readings in measurement	60		-
Repeatability at zero	2.00		% full scale
Repeatability at span level	0.00		% full scale
Deviation from linearity	1.00		% of value
Zero drift	0.13		% full scale
Span drift	0.51		% full scale
Volume or pressure flow dependence	1.60		% of full scale
Atmospheric pressure dependence	0.30		% of value/kPa
Ambient temperature dependence	1.40		% full scale/10K
Combined interference	0.45		% range
Dependence on voltage	0.50		% full scale/10V
Losses in the line (leak)	1.13		% of value
Uncertainty of calibration gas	2.00		% of value

Performance characteristic	RUN 1		Units
Standard deviation of repeatability at zero	use rep at span		mg/m <sup>3</sup>
Standard deviation of repeatability at span level	0.00		mg/m <sup>3</sup>
Lack of fit	0.09		mg/m <sup>3</sup>
Drift	2.54		mg/m <sup>3</sup>
Volume or pressure flow dependence	0.00		mg/m <sup>3</sup>
Atmospheric pressure dependence	0.01		mg/m <sup>3</sup>
Ambient temperature dependence	0.20		mg/m <sup>3</sup>
Combined interference (from MCERTS Certificate)	0.04		mg/m <sup>3</sup>
Dependence on voltage	0.06		mg/m <sup>3</sup>
Losses in the line (leak)	3.55		mg/m <sup>3</sup>
Uncertainty of calibration gas	6.31		mg/m <sup>3</sup>

		RUN 1		Units
Measurement uncertainty	Result	546.68		mg/m <sup>3</sup>
Combined uncertainty		7.68		mg/m <sup>3</sup>
Expanded uncertainty	k = 1.96	15.05		mg/m <sup>3</sup>
Uncertainty corrected to std conds. (O <sub>2</sub> )		15.59		mg/m <sup>3</sup> (REF)

	RUN 1		Units
Expanded uncertainty (no O <sub>2</sub> ) - at 95% Confidence	2.75		% of Value
Expanded uncertainty (no O <sub>2</sub> ) - at 95% Confidence	1.50		% at ELV
Overall Allowable uncertainty (no O <sub>2</sub> ) - at 95% Confidence	15.0		% at ELV
Result of Compliance with Uncertainty Requirement in M2	N/A		-

	RUN 1		Units
Expanded uncertainty (with O <sub>2</sub> ) - at 95% Confidence	7.95		% of Value
Expanded uncertainty (with O <sub>2</sub> ) - at 95% Confidence	7.62		% at ELV
Overall Allowable uncertainty (with O <sub>2</sub> ) - at 95% Confidence	16.8		% at ELV
Result of Compliance with Uncertainty Requirement in M2	COMPLIANT		-

Requirement for SRM is that Uncertainty should be <15% of the value at the ELV, on a dry gas basis, or if O<sub>2</sub> correction is applied less than 15% + the uncertainty associated with the O<sub>2</sub> correction (using sqrt of sum squares to add uncertainty components). Ref EA TGN M2.

## OXIDES OF NITROGEN (as NO<sub>2</sub>): RESULTS SUMMARY

Blackmore Vale Farm Cream Dairy Ltd, Shaftesbury  
A1 - Anaerobic Digester CHP

### Sample Runs

Parameter	Units	Run 1		Mean
Concentration	mg/m <sup>3</sup>	550		550
Uncertainty	±mg/m <sup>3</sup>	48.7		48.7
Mass Emission	g/hr	386		386
Uncertainty	±g/hr	45.0		45.0

### General Sampling Information

Parameter	Value
Standard	EN 14792
Technical Procedure	CAT-TP-21
Probe Material	Stainless Steel
Filtration Type / Size	0.1µm Glass Fibre
Heated Head Filter Used	Yes
Heated Line Temperature	180°C
Date & Result of Last Converter Check	09/10/14 - 96.6%
Span Gas Type	Nitrogen Monoxide
Span Gas Reference Number	CYL 4.0094
Span Gas Expiry Date	30/04/16
Span Gas Start Pressure (bar)	20
Gas Cylinder Concentration (ppm)	401
Span Gas Uncertainty (%)	2
Zero Gas Type	Nitrogen (5 Grade)
Number of Sampling Lines Used	1 / 1
Number of Sampling Points Used	1 / 1
Sample Point I.D.'s	A1

NOTE: Dilution performed to achieve correct span value

FORMAT: Number Used / Number Required

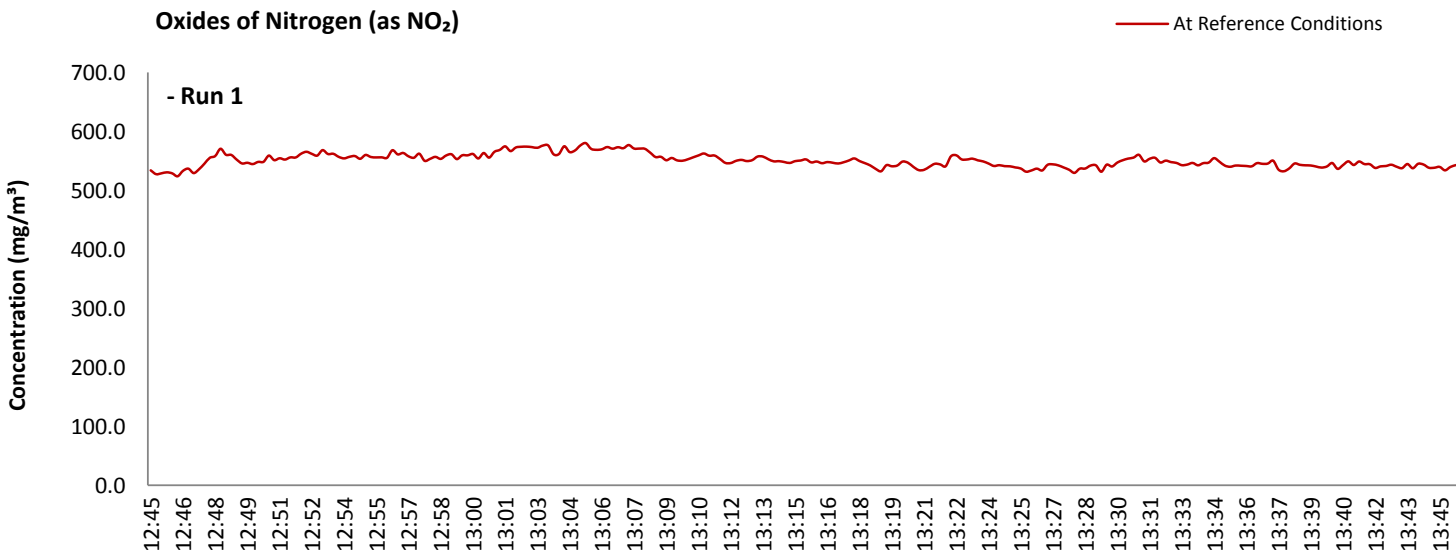
FORMAT: Number Used / Number Required

### Reference Conditions

Reference Conditions are: 273K, 101.3kPa, dry gas, 5% oxygen.

OXIDES OF NITROGEN (as NO<sub>2</sub>): DATA TREND

Graphical Trend of Data



## OXIDES OF NITROGEN (as NO<sub>2</sub>): SAMPLING DETAILS & QUALITY ASSURANCE

### Sampling Details

Parameter	Units	Run 1	
Sampling Times	-	12:45 - 13:45	
Sampling Dates	-	15/01/2015	
Instrument Range	ppm	250	
Span Gas Value	ppm	243.6	

### Quality Assurance

Conditioning Unit Temperature	Units	Run 1	
Average Temperature	°C	2.2	
Allowable Temperature	< °C	4.0	
Temperature Acceptable	-	Yes	

Zero Drift	Units	Run 1	
Zero Down Sampling Line (Pre)	ppm	3.00	
Zero Down Sampling Line (Post)	ppm	1.50	
Zero Drift	ppm	-1.50	
Allowable Zero Drift	± ppm	12.18	
Zero Drift Acceptable	-	Yes	

Span Drift	Units	Run 1	
Span Down Sampling Line (Pre)	ppm	247.00	
Span Down Sampling Line (Post)	ppm	240.00	
Span Drift	ppm	-7.00	
Allowable Span Drift	± ppm	12.18	
Span Drift Acceptable	-	Yes	

Test Conditions	Units	Run 1	
Run Ambient Temperature Range	°C	9 - 12	

### Method Deviations

Nature of Deviation	Run Number
(x = deviation applies to the associated run)	1
There are no deviations associated with the sampling employed.	x

## OXIDES OF NITROGEN (as NO<sub>2</sub>): MEASUREMENT UNCERTAINTY CALCULATIONS

Performance characteristics	RUN 1		Units
Limit value	500.0		mg/m <sup>3</sup> (REF)
TGN M2 Allowable MU	10.0		%
Measured concentration	531.22		mg/m <sup>3</sup> (STP, dry)
Ration NO / NO <sub>2</sub>	5		%
Range Used	250.0		ppm
Range Used [A]	513.1		mg/m <sup>3</sup>
Cal gas conc.	243.6		ppm
Conversion	2.05		ppm to mg/m <sup>3</sup>
MCERTS Range [B]	125.0		mg/m <sup>3</sup>
Lower of [A] or [B]	125.0		mg/m <sup>3</sup>
Cal gas conc.	500.0		mg/m <sup>3</sup>

Performance characteristics	RUN 1		Units
Response time	60		seconds
Number of readings in measurement	60		-
Repeatability at zero	0.40		% full scale
Repeatability at span level	0.40		% full scale
Deviation from linearity	1.00		% of value
Zero drift	-0.61		% full scale
Span drift	-2.83		% full scale
Volume or pressure flow dependence	0.40		% of full scale
Atmospheric pressure dependence	0.30		% of value/kPa
Ambient temperature dependence	0.18		% full scale/10K
Combined interference	0.60		% range
Dependence on voltage	0.40		% full scale/10V
Converter efficiency	96.6		%
Losses in the line (leak)	0.00		% of value
Uncertainty of calibration gas blending	1.40		% of value
Uncertainty of calibration gas	2.00		% of value

Performance characteristic	RUN 1		Units
Standard deviation of repeatability at zero	use rep at span		mg/m <sup>3</sup>
Standard deviation of repeatability at span level	0.05		mg/m <sup>3</sup>
Lack of fit	0.72		mg/m <sup>3</sup>
Drift	-10.45		mg/m <sup>3</sup>
Volume or pressure flow dependence	0.00		mg/m <sup>3</sup>
Atmospheric pressure dependence	0.11		mg/m <sup>3</sup>
Ambient temperature dependence	0.03		mg/m <sup>3</sup>
Combined interference (from MCERTS Certificate)	0.43		mg/m <sup>3</sup>
Dependence on voltage	0.05		mg/m <sup>3</sup>
Converter efficiency	0.52		mg/m <sup>3</sup>
Losses in the line (leak)	0.00		mg/m <sup>3</sup>
Uncertainty of calibration gas blending	4.29		mg/m <sup>3</sup>
Uncertainty of calibration gas	6.13		mg/m <sup>3</sup>

		RUN 1		Units
Measurement uncertainty	Result	531.22		mg/m <sup>3</sup>
Combined uncertainty		12.90		mg/m <sup>3</sup>
Expanded uncertainty	k = 1.96	25.28		mg/m <sup>3</sup>
Uncertainty corrected to std conds. (O <sub>2</sub> )		26.20		mg/m <sup>3</sup> (REF)

	RUN 1		Units
Expanded uncertainty (no O <sub>2</sub> ) - at 95% Confidence	4.76		% of Value
Expanded uncertainty (no O <sub>2</sub> ) - at 95% Confidence	5.06		% at ELV
Overall Allowable uncertainty (no O <sub>2</sub> ) - at 95% Confidence	10.0		% at ELV
Result of Compliance with Uncertainty Requirement in M2	N/A		-

	RUN 1		Units
Expanded uncertainty (with O <sub>2</sub> ) - at 95% Confidence	8.84		% of Value
Expanded uncertainty (with O <sub>2</sub> ) - at 95% Confidence	9.11		% at ELV
Overall Allowable uncertainty (with O <sub>2</sub> ) - at 95% Confidence	12.5		% at ELV
Result of Compliance with Uncertainty Requirement in M2	COMPLIANT		-

Requirement for SRM is that Uncertainty should be <10% of the value at the ELV, on a dry gas basis, or if O<sub>2</sub> correction is applied less than 10% + the uncertainty associated with the O<sub>2</sub> correction (using sqrt of sum squares to add uncertainty components). Ref EA TGN M2.



## CARBON MONOXIDE: RESULTS SUMMARY

Blackmore Vale Farm Cream Dairy Ltd, Shaftesbury  
A1 - Anaerobic Digester CHP

### Sample Runs

Parameter	Units	Run 1		Mean
Concentration	mg/m <sup>3</sup>	431		431
Uncertainty	±mg/m <sup>3</sup>	36.5		36.5
Mass Emission	g/hr	302		302
Uncertainty	±g/hr	34.4		34.4

### General Sampling Information

Parameter	Value
Standard	EN 15058
Technical Procedure	CAT-TP-21
Probe Material	Stainless Steel
Filtration Type / Size	0.1µm Glass Fibre
Heated Head Filter Used	Yes
Heated Line Temperature	180°C
Span Gas Type	Carbon Monoxide
Span Gas Reference Number	CYL 2.0058
Span Gas Expiry Date	07/09/17
Span Gas Start Pressure (bar)	120
Gas Cylinder Concentration (ppm)	4060.36
Span Gas Uncertainty (%)	2
Zero Gas Type	Nitrogen (5 Grade)
Number of Sampling Lines Used	1 / 1
Number of Sampling Points Used	1 / 1
Sample Point I.D.'s	A1

NOTE: Dilution performed to achieve correct span value

FORMAT: Number Used / Number Required

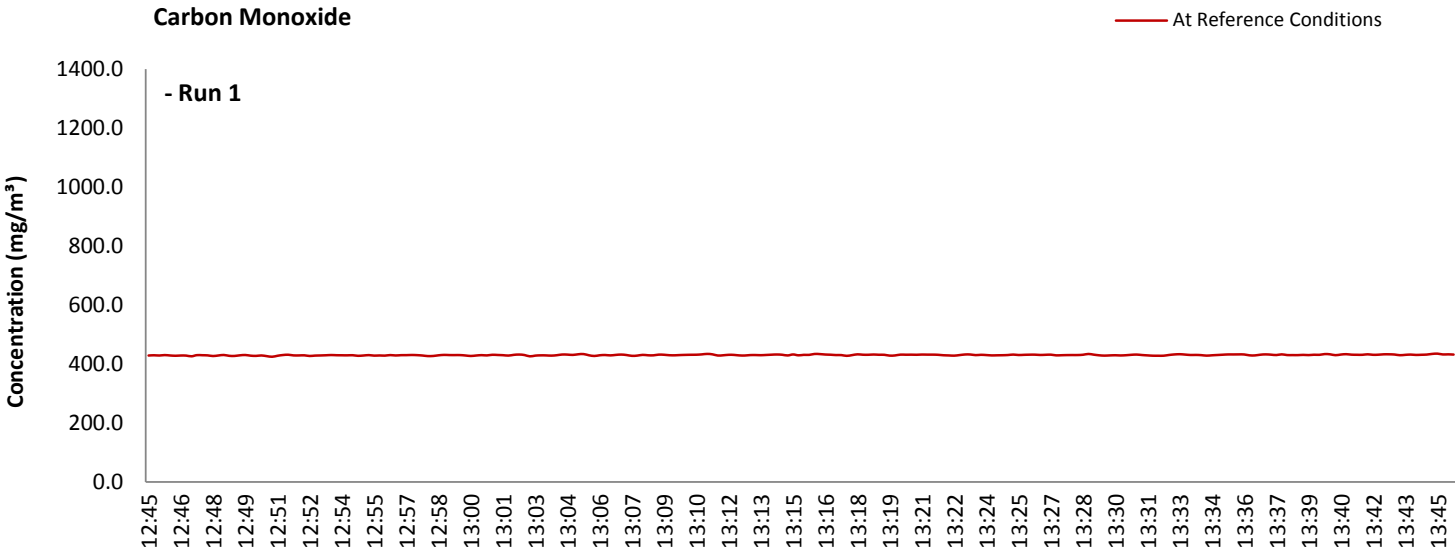
FORMAT: Number Used / Number Required

### Reference Conditions

Reference Conditions are: 273K, 101.3kPa, dry gas, 5% oxygen.

CARBON MONOXIDE: DATA TREND

Graphical Trend of Data



## CARBON MONOXIDE: SAMPLING DETAILS & QUALITY ASSURANCE

### Sampling Details

Parameter	Units	Run 1	
Sampling Times	-	12:45 - 13:45	
Sampling Dates	-	15/01/2015	
Instrument Range	ppm	2000	
Span Gas Value	ppm	1120.7	

### Quality Assurance

Conditioning Unit Temperature	Units	Run 1	
Average Temperature	°C	2.2	
Allowable Temperature	< °C	4.0	
Temperature Acceptable	-	Yes	

Zero Drift	Units	Run 1	
CAL 1 Zero Down Sampling Line (Pre)	ppm	1.00	
CAL 1 Zero Down Sampling Line (Post)	ppm	1.00	
CAL 1 Zero Drift	ppm	0.00	
Allowable Zero Drift	± ppm	56.04	
Zero Drift Acceptable	-	Yes	

Span Drift	Units	Run 1	
CAL 1 Span Down Sampling Line (Pre)	ppm	1129.00	
CAL 1 Span Down Sampling Line (Post)	ppm	1100.00	
CAL 1 Span Drift	ppm	-29.00	
Allowable Span Drift	± ppm	56.04	
Span Drift Acceptable	-	Yes	

Test Conditions	Units	Run 1	
Run Ambient Temperature Range	°C	9 - 12	

### Method Deviations

Nature of Deviation	Run Number	
(x = deviation applies to the associated run)	1	
There are no deviations associated with the sampling employed.	x	

## CARBON MONOXIDE: MEASUREMENT UNCERTAINTY CALCULATIONS

Performance characteristics	RUN 1		Units
Limit value	1400.0		mg/m <sup>3</sup> (REF)
TGN M2 Allowable MU	6.0		%
Measured concentration	415.45		mg/m <sup>3</sup> (STP, dry)
Range Used	2000.0		ppm
Range Used [A]	2498.4		mg/m <sup>3</sup>
Cal gas conc.	1120.7		ppm
Conversion	1.25		ppm to mg/m <sup>3</sup>
MCERTS Range [B]	95.0		mg/m <sup>3</sup>
Lower of [A] or [B]	95.0		mg/m <sup>3</sup>
Cal gas conc.	1400.0		mg/m <sup>3</sup>

Performance characteristics	RUN 1		Units
Response time	60		seconds
Number of readings in measurement	60		-
Repeatability at zero	0.40		% full scale
Repeatability at span level	0.40		% full scale
Deviation from linearity	1.00		% of value
Zero drift	0.00		% full scale
Span drift	-2.57		% full scale
Volume or pressure flow dependence	0.40		% of full scale
Atmospheric pressure dependence	0.30		% of value/kPa
Ambient temperature dependence	0.05		% full scale/10K
Combined interference	0.73		% range
Dependence on voltage	0.40		% full scale/10V
Losses in the line (leak)	0.00		% of value
Uncertainty of calibration gas blending	1.40		% of value
Uncertainty of calibration gas	2.00		% of value

Performance characteristic	RUN 1		Units
Standard deviation of repeatability at zero	use rep at span		mg/m <sup>3</sup>
Standard deviation of repeatability at span level	0.05		mg/m <sup>3</sup>
Lack of fit	0.55		mg/m <sup>3</sup>
Drift	-6.16		mg/m <sup>3</sup>
Volume or pressure flow dependence	0.00		mg/m <sup>3</sup>
Atmospheric pressure dependence	0.08		mg/m <sup>3</sup>
Ambient temperature dependence	0.01		mg/m <sup>3</sup>
Combined interference (from MCERTS Certificate)	0.40		mg/m <sup>3</sup>
Dependence on voltage	0.05		mg/m <sup>3</sup>
Losses in the line (leak)	0.00		mg/m <sup>3</sup>
Uncertainty of calibration gas blending	3.36		mg/m <sup>3</sup>
Uncertainty of calibration gas	4.80		mg/m <sup>3</sup>

		RUN 1		Units
Measurement uncertainty	Result	415.45		mg/m <sup>3</sup>
Combined uncertainty		8.54		mg/m <sup>3</sup>
Expanded uncertainty	k = 1.96	16.73		mg/m <sup>3</sup>
Uncertainty corrected to std conds. (O <sub>2</sub> )		17.34		mg/m <sup>3</sup> (REF)

	RUN 1		Units
Expanded uncertainty (no O <sub>2</sub> ) - at 95% Confidence	4.03		% of Value
Expanded uncertainty (no O <sub>2</sub> ) - at 95% Confidence	1.20		% at ELV
Overall Allowable uncertainty (no O <sub>2</sub> ) - at 95% Confidence	6.0		% at ELV
Result of Compliance with Uncertainty Requirement in M2	N/A		-

	RUN 1		Units
Expanded uncertainty (with O <sub>2</sub> ) - at 95% Confidence	8.47		% of Value
Expanded uncertainty (with O <sub>2</sub> ) - at 95% Confidence	7.56		% at ELV
Overall Allowable uncertainty (with O <sub>2</sub> ) - at 95% Confidence	9.6		% at ELV
Result of Compliance with Uncertainty Requirement in M2	COMPLIANT		-

Requirement for SRM is that Uncertainty should be <6% of the value at the ELV, on a dry gas basis, or if O<sub>2</sub> correction is applied less than 6% + the uncertainty associated with the O<sub>2</sub> correction (using sqrt of sum squares to add uncertainty components). Ref EA TGN M2.

## OXYGEN: RESULTS SUMMARY

Blackmore Vale Farm Cream Dairy Ltd, Shaftesbury  
A1 - Anaerobic Digester CHP

### Sample Runs

Parameter	Units	Run 1		Mean
Concentration	% v/v	5.6		5.6
Uncertainty	±% v/v	0.41		0.41

### General Sampling Information

Parameter	Value
Standard	EN 14789
Technical Procedure	CAT-TP-21
Probe Material	Stainless Steel
Filtration Type / Size	0.1µm Glass Fibre
Heated Head Filter Used	Yes
Heated Line Temperature	180°C
Span Gas Type	Synthetic Air (5 Grade)
Span Gas Reference Number	CYL 11.0154
Span Gas Expiry Date	06/02/2019
Span Gas Start Pressure (bar)	50
Gas Cylinder Concentration (% v/v)	21.07
Span Gas Uncertainty (%)	2
Zero Gas Type	Nitrogen (5 Grade)
Number of Sampling Lines Used	1 / 1
Number of Sampling Points Used	1 / 1
Sample Point I.D.'s	A1

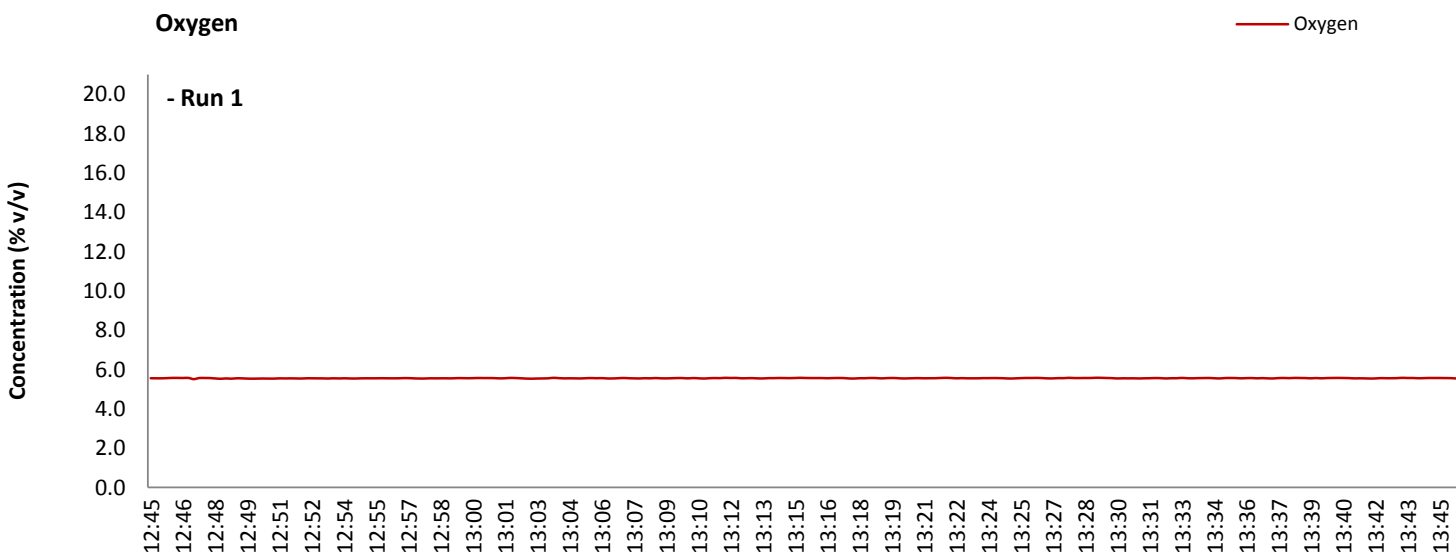
NOTE: Dilution performed to achieve correct span value

FORMAT: Number Used / Number Required

FORMAT: Number Used / Number Required

OXYGEN: DATA TREND

Graphical Trend of Data



## OXYGEN: SAMPLING DETAILS & QUALITY ASSURANCE

### Sampling Details

Parameter	Units	Run 1	
Sampling Times	-	12:45 - 13:45	
Sampling Dates	-	15/01/2015	
Instrument Range	% v/v	25	
Span Gas Value	% v/v	5.00	

### Quality Assurance

Conditioning Unit Temperature	Units	Run 1	
Average Temperature	°C	2.2	
Allowable Temperature	< °C	4.0	
Temperature Acceptable	-	Yes	

Zero Drift	Units	Run 1	
Zero Down Sampling Line (Pre)	% v/v	0.04	
Zero Down Sampling Line (Post)	% v/v	0.10	
Zero Drift	% v/v	0.06	
Allowable Zero Drift	± % v/v	0.25	
Zero Drift Acceptable	-	Yes	

Span Drift	Units	Run 1	
Span Down Sampling Line (Pre)	% v/v	4.90	
Span Down Sampling Line (Post)	% v/v	4.92	
Span Drift	% v/v	0.02	
Allowable Span Drift	± % v/v	0.25	
Span Drift Acceptable	-	Yes	

Test Conditions	Units	Run 1	
Run Ambient Temperature Range	°C	9 - 12	

### Method Deviations

Nature of Deviation	Run Number
(x = deviation applies to the associated run)	1
There are no deviations associated with the sampling employed.	x

## OXYGEN: MEASUREMENT UNCERTAINTY CALCULATIONS

Performance characteristics	RUN 1		Units
Limit value	N/A		%vol
TGN M2 Allowable MU	6.0		%
Measured concentration	5.56		%vol
Range Used	25.0		%vol
Cal gas conc.	21.1		%vol

Performance characteristics	RUN 1		Units
Response time	60		seconds
Number of readings in measurement	60		-
Repeatability at zero	0.04		% full scale
Repeatability at span level	0.04		% full scale
Deviation from linearity	0.18		% of value
Zero drift	1.22		% full scale
Span drift	0.41		% full scale
Volume or pressure flow dependence	0.20		% of full scale
Atmospheric pressure dependence	0.30		% of value/kPa
Ambient temperature dependence	-0.07		% full scale/10K
Combined interference	0.56		% range
Dependence on voltage	0.02		% full scale/10V
Losses in the line (leak)	0.00		% of value
Uncertainty of calibration gas			% of value

Performance characteristic	RUN 1		Units
Standard deviation of repeatability at zero	use rep at span		%vol
Standard deviation of repeatability at span level	0.01		%vol
Lack of fit	0.03		%vol
Drift	0.16		%vol
Volume or pressure flow dependence	0.00		%vol
Atmospheric pressure dependence	0.02		%vol
Ambient temperature dependence	-0.01		%vol
Combined interference (from MCERTS Certificate)	0.08		%vol
Dependence on voltage	0.00		%vol
Losses in the line (leak)	0.00		%vol
Uncertainty of calibration gas	0.06		%vol

		RUN 1		Units
Measurement uncertainty	Result	5.56		%vol
Combined uncertainty		0.21		%vol
Expanded uncertainty	k = 1.96	0.41		%vol

	RUN 1		Units
Expanded uncertainty (no O <sub>2</sub> ) - at 95% Confidence	7.46		% of Value
Result of Compliance with Uncertainty Requirement in M2	COMPLIANT		-

Requirement for SRM is that Uncertainty should be 0.5%vol absolute or 6% relative whichever is the lower, on a dry gas basis. Ref EA TGN M2.